

STU DENT GUIDE BARCELONA





What & Where?



Mission



Public transport



Airport



IED Barcelona



Cost of living



Accommodation



Accommodation options



Bureaucratic procedures



Bank account



Services



Contact

1

What services do we offer? / Where can you find us?

The Student Services Department offers guidance on following topics:

- Bureaucracy (visa, visa extension, NIE/TIE, registration, fingerprinting)
- Mobility (travel, transport, places of interest)
- Accommodation (students and family) for short and long stays
- Medical insurance (European Health Insurance Card)
*Valid for study visa
- Language academies
- Opening of bank account

Remember that you can contact us whenever you need to through these options:

- By email
studentservices.barcelona@ied.es
- In person
Monday to Friday from 9 am to 6 pm at our offices, located at Calle Biada, 11, Barcelona. — Point 1

NEWS!

Do you want to stay up to date with everything happening daily at IED Barcelona and in the city?

Remember that you have at your disposal a new [Telegram channel*](#). From Student services we will contact you to give you access.

*Exclusively for IED Barcelona students

2

Our mission

- **Support**
“Be aware, be present
- **Trust**
“Personal support through a professional approach
- **Growth**
“Association
- **Integration**
“We’re your IED journey
- **Perspective**
“Knowledge, learning and development
- **Expectations**
“You’re alumni from day one
- **Reference**
“We’re your guide for life beyond IED
- **Community**
“Commitment

3

Public Transport: Learning how to move around in the most efficient way

By metro, bus, tram, funicular or even cable car... getting around within the city of Barcelona couldn't be easier or more fun. Depending on the distances that you have to travel, you can choose one or the other, but all these options are perfect for tourism. In addition, Barcelona also lends itself to moving around by bicycle, so using the greenest energy is always within the reach of the traveller.

The city has a very extensive transport network; some services operate 24/7, and prices are affordable.

Although Barcelona is well connected by public transport, the city's major junctions and interchanges, such as Plaça Catalunya and the Passeig de Gràcia and França stations, are located around Ciutat Vella and Eixample neighbourhoods.

[Here](#) all the information about Barcelona Metropolitan Transport.



—Our advice for moving around Barcelona is planning your visits ahead, writing down which are the closest stations. Whenever you can, it is advisable to arrive on foot, because this way you will enjoy the atmosphere of the streets, which are also part of the culture, and you will be able to discover monuments that don't even appear in travel guides.

Barcelona has an integrated public transport system; this means that the metro as well as the bus, tram and suburban train work with the same type of ticket.

When buying the ticket, take into account the zone system, since there are six different zones. If you do not need to leave the urban centre, a zone 1 ticket will be enough.

FAQs

- **1. How much does public transport cost?**

Barcelona's public transport works with an integrated system that includes metro, bus, commuter train, tram and cable car to Montjuïc in the same ticket. More information: <https://www.tmb.cat/en/barcelona-fares-metro-bus>

- **2. How can I pay on the bus?**

By card: next to the driver's cabin there's a [single ticket validation reader](#). You will only need to swipe your card to purchase. In cash: by paying to the driver. Please note they do not accept banknotes over 10,00€.

- **3. What is the public transport schedule?**

Public transport has different schedules: metro works from 5 am to midnight; the bus schedule depends on the line, but they run virtually all day — there are also night lines; and the funicular operates from 7.30 am to 8 pm or 10 pm, depending on the time of year.

- **4. Are pets allowed?**

Pets are allowed on the metro, bus, tram and suburban train, provided that certain requirements are met and in specific time slots. You can consult the regulations in this regard on the website of the means of transport. As for taxis, make sure that pets are welcome before hiring the service.

Some advice

Download some applications that are ideal for planning public transport journeys within the city on your mobile phone:

- **Google Maps**
- **AMB Mobilitat:** This service allows you to know, in real time, when the next bus will pass by your stop using your mobile phone or any device with internet access. In this way, you can find out information about the waiting time and decide, based on this, which transport or combination of transports is best for you at any given time.
- **TMB App:** This application allows you to find out information about the lines, service alerts, general information on public transport for trip planning, as well as customer service channels.



Barcelona Airport

Barcelona-El Prat Airport has two passenger terminals, Terminal T1 and Terminal T2. To get there, there are different lines of public transport available. Below, you will find the most used options:

Aerobús

Lines A1 and A2 connect terminals T1 and T2 of the airport with Plaça d'Espanya and Plaça de Catalunya, from which you can easily connect to the city's bus and metro network.

Aerobús A1: Airport (Terminal T1) – Plaça Catalunya. It connects the terminal with the centre of Barcelona every 5 minutes during rush hour, every day of the year. -Journey time: 20 to 30 minutes

Aerobús A2: Airport (Terminal T2) – Plaça Catalunya. It connects the terminal with the centre of Barcelona every 10 minutes during rush hour, every day of the year. -Journey time: 20 to 30 minutes

Buses

Bus line 46 connects Plaça d'Espanya and terminals T1 and T2 of Barcelona Airport. All vehicles are adapted. It must be taken into account that the frequency of this line ranges from 15 to 25 minutes depending on the hour, and that your luggage dimensions must not exceed 100 x 60 x 25 cm.

Night buses (NIT Bus)

Line N16 will take you to terminal T2 and line N17 to terminal T1. Both have a frequency of 20 minutes.

Taxi

There are taxi ranks in front of the arrivals areas of terminal T1, the Barcelona - Madrid Corridor, and terminals T2 A and T2 B. -Journey time: 20 to 30 minutes. If you need an adapted taxi service, you can call +34 934 20 80 88 ([Taxi Amic](#)).



Some advice

- Taking the bus line 46, or N16 or N17 night buses, to get to the city centre is that you can use the T-Casual card, while for the Aerobús service you will need to buy a separate ticket.
- The advantage of the Aerobús over the regular TMB bus service is that it runs more regularly, offers more space for luggage and makes fewer stops, which means that travel time to and from the airport is reduced.
- You can use the free shuttle bus service “BusTransit” to move between the two terminals (T1 and T2).

5

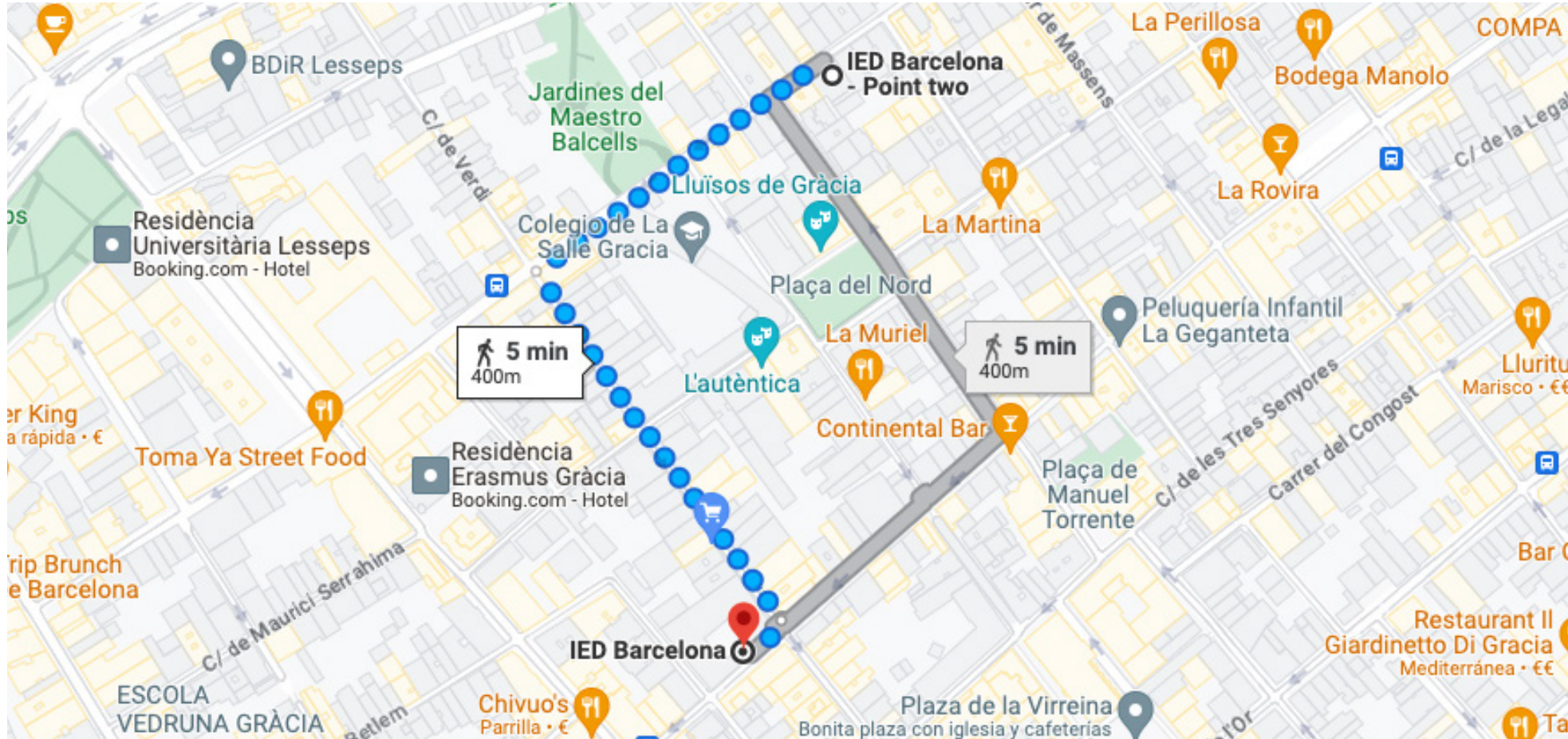
How to get to the Istituto Europeo di Design. IED Barcelona

You will find us at:

- **Carrer de Biada, 11, 08012 Barcelona**
(Main building – Point 1)
- **Carrer de Sant Salvador, 70-72, 08024 Barcelona**
(Secondary building – Point 2)

Both buildings are located in the Gràcia district, one of the best-known neighbourhoods in Barcelona.

To get to the university, you have three options within the Barcelona public transport system:



- **By metro:** green line (L3) getting off at the Fontana or Lesseps stops
- **By bus:**
 - Line 39, Biada – Torrent de l’Olla stop
 - Line 116, Sant Salvador – Verdi stop
 - Line 27, Av. Príncep d’Astúries – Pl. Lesseps stop
 - Line 32, Av. Príncep d’Astúries – Pl. Lesseps stop
 - Line 92, Av. Príncep d’Astúries – Pl. Lesseps stop
- **By night bus:** N4

6

Cost of living in Barcelona

Shopping list.

The average price of the basic monthly food basket is 300 euros per person, according to INE (National Institut of Statistics)

Approximate monthly expenses of a student in Barcelona:

- Accommodation (room in a shared apartment): from €300
- Services (water, electricity, telephone, gas): from €75
- Transport pass: from €20
- Leisure expenses: from €40

You can check this website for practical information and advice before traveling to Spain:

spain.info/es/informacion-practica/consejos-viaje



Accommodation

Surely you have wondered where to stay during your academic year, that's why the Istituto Europeo di Design (IED) offers these tips to choose your accommodation correctly.

- **Tranquility**

Barcelona is a dynamic and cosmopolitan city, sometimes with a hectic atmosphere both day and night. However, there is no shortage of quiet residential areas. In this sense, the **Zona Alta**, which includes small neighbourhoods such as Pedralbes and Sarrià–Sant Gervasi, can be considered the furthest from the hustle and bustle.

- **Price per square metre**

Although the average price per square metre fluctuates every year, trends always remain. In this sense, the **Ciutat Vella** neighbourhood (20 minutes by public transport from IED) and **Gràcia** (where IED is located) tend to be cheaper, while the price of homes in **Eixample** (a 30-minute walk from IED) and **Les Corts** (30 minutes by public transport from IED and which includes some parts of the so-called **Zona Alta**) are usually above the city average.

- **Services**

Regarding services, such as libraries, schools, health centres and the like, the Ciutat Vella neighbourhood is the least recommended; although services of this type are not lacking, it is an eminently tourist area, with resources also adapted to this type of public.

- **Job opportunities**

Both Gràcia area and Eixample are two of the most important neighbourhoods when it comes to businesses and offices. On the other hand, for those who have a job in the tourism sector and prefer to live close to their workplace, Ciutat Vella could be a very practical solution.

8

Accommodation options

students residences

private room in flats

apartments

hotel room or studio

IED does not have dorms of its own, but we do have several collaborations for student accommodation. In case you decide to contact any of the following accommodation options, remember to identify yourself as an IED Barcelona student so that they apply the corresponding discount and include studentservices.barcelona@ied.es in copy so that we are aware of your situation.

Accommodations marked with (*) offer special reductions for IED Barcelona students. Contact us to learn more.



STUDENTS RESIDENCES

1. Residencia Erasmus Gràcia*

In the heart of Barcelona, the residence is located 15 minutes from Parc Güell and the modernist Casa Vicens. It is the preferred place for university students to stay, both for short and long stays, due to its comforts, its good atmosphere and its location.

Contact: info@residenciaerasmusgracia.com

Website: www.residenciaerasmusgracia.com/es

2. Residencia Xior*

Make new friends and live intensely while having all the comforts and best services, feeling at home in Xior university residences in Barcelona. That's what life in this mixed residence feels like.

Xior The Loftown

Contact: theloftown@xior.es

Website: xior.es/xior-residencia-estudiantes-barcelona-loft-town

Xior Collblanc

Contact: collblanc@xior.es

Website: xior.es/residencia-estudiantes-barcelona-collblanc

Xior Diagonal Besos

Contact: diagonalbesos@xior.es

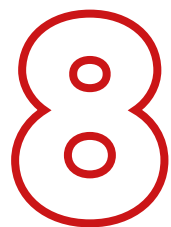
Website: xior.es/xior-residencia-estudiantes-barcelona-besos

3. Residencia Onix

Spaces designed to study, enjoy, relax and share. These are characteristic of the common spaces, where the ONIX family spends a large part of their time. Quiet and group study rooms; indoor leisure spaces and a terrace with a swimming pool where you can disconnect; and a large multipurpose space that connects everything. Equipped spaces where the most important thing are the students.

Contact: frontdesk@residenciaonix.com

Website: residenciaonix.com



4. Residencia Unihabit

Unihabit Ciutat Vella

The residence offers you a place to live in the centre of the city, where you have excellent connections with all kinds of transport: access to the metro, bus lines, trains, railways, taxis and parking just few minutes on foot. The easy access to the beaches and the large park of Montjuïc facilitate the practice of outdoor sports and access to leisure areas.

Contact: infociutatvella@unihabit.com

Website: unihabit.com/residencias-universitarias-barcelona

Unihabit Gràcia Apartamentos

The apartments offer a multifunctional space made up of a kitchen, living room, two bedrooms and a full bathroom, with heating and air conditioning.

Contact: infogracia@unihabit.com

Website: www.unihabit.com/residencia-universitaria-barcelona-gracia

5. Residencia RESA

Residencia Universitaria Lesseps

Studying in Barcelona will undoubtedly be an experience you will never forget. The residence is the perfect option if you are looking for accommodation near your university, with the best environment to study and make new friends. A space to live and study at your own pace. Enjoy the freedom of a residence open 24 hours a day and throughout the year.

Contact: lesseps@resa.es

Website: resa.es/es/residencias/barcelona/residencia-universitaria-lesseps/residencia

Residencia Universitaria Pere Felip Monlau

If you come to study in Barcelona and want to live in the centre and enjoy the diversity of this multicultural city, this the residence for you. Located in the Raval neighbourhood, in the historic centre, the residence is located very close to the best universities in town and well connected to the rest of the city by public transport.

Contact: monlau@resa.es

Website: resa.es/es/residencias/barcelona/residencia-universitaria-pere-felip-monlau/residencia



PRIVATE ROOMS IN FLATS SHARED WITH OTHER STUDENTS

Barna Students Place*

Rooms for rent in flats located in the best areas of the city available to students who come to do a master's, postgraduate or other studies in Barcelona. You will live near your school and share a flat with students from the same education centre, or with students with the same profile.

Contact: bsp@barnastudentsplace.com

Website: barnastudentsplace.com

Rooms Barcelona

You will have friends in the city the moment you arrive. All tenants are between the ages of 18 and 30. They come from all over the world to study or work here. Choose your favourite apartment and explore Barcelona with your new friends.

Contact: info@rooms-barcelona.com

Website: rooms-barcelona.com

Cotown*

Brought to the market to revolutionise the concept of co-living in Spain. But, above all, it provides the opportunity for future cotowners, both students and young professionals, to be "lucky citizens". The crew proposes to cover and support this new housing need to promote the optimisation of the spaces within the apartments and transform them into a modern, technological home that can be adapted to any circumstance.

Contact: book@cotown.com

Website: cotown.com/es



Do you rather stay in a private room in flats shared with private citizens? Contact us and we'll provide you with further details.

APARTMENTS

Uniplaces*

Unique housing platform aiming to get rid of guarantors, red tape and other hassles, with a platform that is easy, fast and secure, for total peace of mind, offering unique sites for all types of budgets, whether for a month or forever, and just one click away.

Contact: bookings@uniplaces.com

Website: uniplaces.com/es

The Home Like

Option for monthly stays where people can rent their ideal home through a simple and reliable technology-enabled platform that handles the entire customer journey.

You can fill in the following FORM to receive personalised assistance, or you can contact the team at the following address maria.tirado@homelike.cc (María José Tirado Rodríguez)

Website: thehomelike.com

HOTEL ROOM OR STUDIO

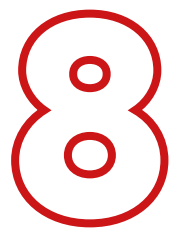
(designed for short and/or family stays)

Sonder*

Spaces that inspire and delight, meeting needs without sacrificing style, while delivering seamless, personalised experiences with remarkable, accessible hospitality.

Contact: leda.zanlungo@sonder.com

Website: sonder.com/es-es



MORE INFORMATION

If you are looking for something different or you still don't know where to stay yet, send an email to studentservices.barcelona@ied.es and one of our advisors will contact you as soon as possible.



Legal procedures

It's mandatory for non-EU students to obtain a student visa before their arrival at IED Barcelona.

If you have any questions, you can ask our legal collaborator **BXC Advisors**, lawyers specialising in migration law and procedures.

Email address:

bencinas@bxcadvisors.com (Bárbara)

enrique@bxcadvisors.com (Enrique)

// Please note: this is a private service not included in the IED tuition fee //

Do you need information about your visa?

The visa is a residence authorisation that allows non-EU citizens to remain in Spain while they study in education centres, carry out research in the country, or participate in some type of training (studies).

Do you need information about the European Union Citizen Registration Certificate?

This document accredits registration in the Central Register of Foreign Nationals of citizens of a Member State of the European Union or of another State that is part of the Agreement on the European Economic Area who are going to reside in Spain for a period of more than three months.

Do you need information about the TIE/NIE?

When you do not come from the European Union, one of the main procedures you must carry out is obtaining the Foreigner Identity Card (TIE). This is a physical identification document that certifies legal residence in the country.



After your arrival in Spanish territory, you will have 30 days to complete this procedure.

// Important: TIE is not to be confused with NIE. The latter is the Foreigner's Identification Number and is processed by the Public Administrations to identify foreigners who, for different reasons, have to interact with Spain. //

The NIE differs from the TIE because:

- NIE is granted automatically when you start the procedures with the Public Administration
- There is no physical NIE card
- It cannot be withdrawn, i.e., if an infraction is committed that entails the withdrawal of the TIE, the NIE remains valid
- NIE does not prove legal residence in Spain
- NIE does not expire

The TIE, on the other hand, does have an expiration date, so it must be renewed to continue to be valid.

Do you need information about the municipal registration?

The municipal registration (*padrón*, in Spanish) is the act of registering in the municipality of habitual residence and determines that the person is considered a resident of that town or city. The procedure allows registration in the register of inhabitants of the city of Barcelona:

- For those people who come to live in the city from another municipality within Spain, or from abroad;
- For the people who, for whatever reason, do not appear in the Barcelona register of inhabitants, although they continue to live in the city.

Send an email to studentservices.barcelona@ied.es and we will help you with the procedures to process these documents as soon as possible.

10

Bank account

–It is the most comfortable and secure way to handle money.

All banks accept foreigners as clients, but each bank's conditions vary. Generally, to open an account, the bank will request that your documentation in Spain has been legalised. For European citizens, in principle, it will be enough to present the identity card of their country of origin.

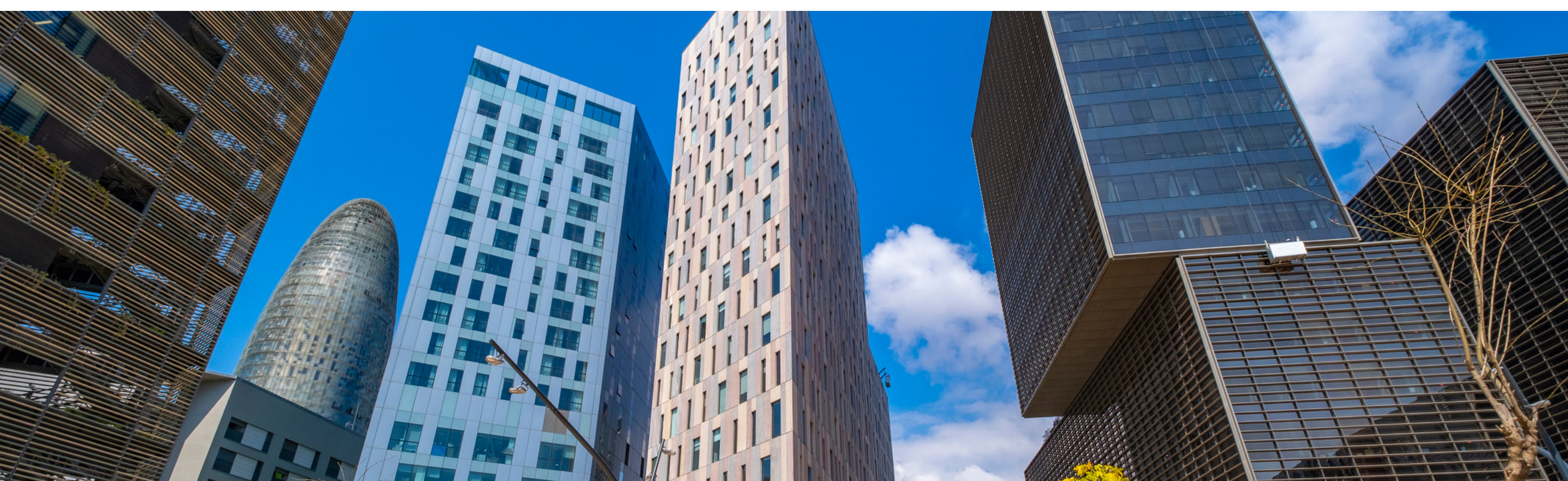
IED has an agreement with Banco Sabadell to open an account with only your passport, so that you will be able to have access to an account quickly as soon as you arrive.

Do you plan to open a bank account with only your identity document?

BANCO SABADELL MAKES IT EASY FOR YOU

Their personal account managers will advise you on everything you need during your stay in the city, such as:

- Opening a bank account
- Contracting health insurance
- Transferring your money to Spain
- Meeting other people at networking events



BARCELONA WELCOME HUB

It has an exclusive Hub in the centre of Barcelona and three Welcome Offices in Catalonia.

Hub Barcelona address:

Avenida Diagonal, 456, 08006 Barcelona

- It is the only financial entity in Spain that has an exclusive Hub for international customers
- These offices are specialised in the operations of international clients and all their employees have specific knowledge on this type of client
- The team is familiar with the procedures required to open a non-resident bank account and have experience preparing mortgages for expatriates

WHAT MAKES IT DIFFERENT FROM THE COMPETITION?

- Multilingual managers
- Documentation / ATM / Remote banking / Telephone service in different languages
- Non-contact circuit for non-resident clients
- Welcome Service; financial and non-financial services
- Key Account translation service
- Opening of the account and contracting of Salud Sanitas health insurance with passport
- 24/7 telephone assistance in English, French and German

CONTACT

mhernando@bancsabadell.com

Services

Now, enjoy the discounts that IED offers you just for being part of the IED family. Contact our department to find out about the corresponding discount.

LANGUAGE SCHOOLS

- **BCN Languages** (located 12 minutes' walk from IED)
bcnlanguages.com
- **Olé Languages** (located 27 minutes' walk from IED)
ole-barcelona.es
- **Idiomas Tarradellas** (located 31 minutes' walk from IED)
idiomestarradellas.cat
- **Aston School** (located 37 minutes' walk from IED)
astonschool.es

STATIONERY SHOPS/BOOKSHOPS

- **Lorente Ofimatica** (located 6 minutes' walk from IED)
lorenteofimatica.com
- **Vicenç Piera** (located 18 minutes' walk from IED)
vpiera.com/es
- **Raima** (located 34 minutes' walk from IED)
raima.cat/es



GYMS

- **TRIB3** (located 12 minutes' walk from IED)
trib3.es
- **Altafit** (located 19 minutes' walk from IED)
altafitgymclub.com

Enjoy the following advantages:

- Free enrolment in all centres
- Free access system
- 8% discount on fees
- Access to all Altafit centres
- Online training platform

RESTAURANTS

- **Hula Poke Food** (located 2 minutes' walk from IED)
hulapokefood.com
- **Pasarela** (located 2 minutes' walk from IED)
menu.tillersystems.com/25315/pasarela

12

Contact

Student Support (Álvaro Nieto)

studentservices.barcelona@ied.es

Advice; service management through the creation of different collaboration agreements; and organisation of activities for students before, during and after their stay at IED Barcelona.

Career Services (Lorena Alegre)

careerservices.barcelona@ied.es

Professional advice to students through direct contact with national and international companies.

Library (Borja Aliaga)

biblioteca.barcelona@ied.es

Located in the Point 2 building, its purpose is to support the learning, training and research of the IED Barcelona community through its specialised services and by facilitating access to its information resources.



ied.es/barcelona

YOU CAN FOLLOW US:

